



ARCHITECTURAL DIGEST HOME DESIGN SHOW {HIGHLIGHTS}

MAR 23RD 2010 09:57 AM

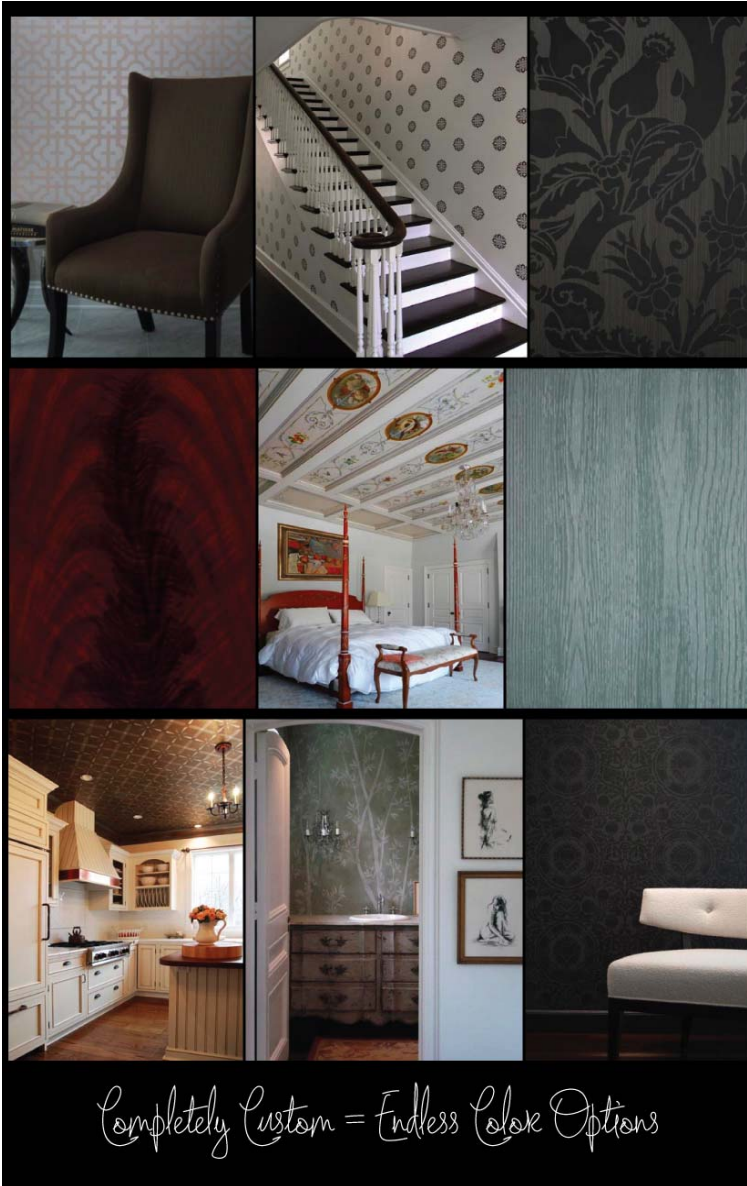


*The furniture is beautifully made - but the lighting...
The lighting stole my heart!*



The glamorous industrialism of **John Pomp Studios** really spoke to my aesthetic. Their booth at the show was painted smokey grey. They had their glass making and metal smith tools hanging on the wall, displayed

as a collection. Each piece was perfectly worn, rustic, and arranged as if it too was a product to be sold ~ *it was so well done*, I thought perhaps I should start a collection of my own tools! The furniture was impeccably made. I adore the mix of materials; cool, modern metal with the warm, rustic leather handles. The lighting, *please!* They've stricken a balance between masculine/feminine, **modern/rustic** - it's hard for me to explain, but I am certain **John Pomp** will be at the top of my mind the next time I'm in the market for a chandelier.



The hand-painted wallpaper and decorative painting by **Design RED Studio** left me *breathless*. The booth was full of wall paper and decorative painting samples. They've some some decorative treatments

on mirror that absolutely knock my socks off. One piece in particular was inspired by a 1920's style powder-puff. It was hand-painted on mirror with gold-leaf, burnt orange, black and cream. It would be pretty incredible to use that finish in a ladies dressing room.

If you saw it, I am sure you'd agree!



Last but not least, we have **The New Traditionalists**. The line is inspired by traditional furniture silhouettes, exceptional clothing, interesting objects and history. They marry old and new in a way that connects the traditional with how we live today. Their motto says it all "If you believe that "traditional" and "cool" are not mutually exclusive, you are one of

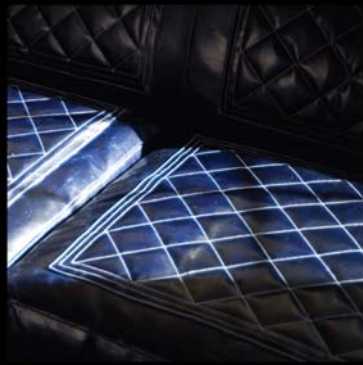
The New Traditionalists
connect
traditional with today.



Navy Blue
Leather

....
It's all I
can think about!

....
Gorgeous.



A strong
attention to detail
is evident throughout
the line.

